

CITY OF PULLMAN

Public Works and Planning Departments

325 S.E. Paradise Street, Pullman, WA 99163
(509) 338-3220 or (509) 338-3213 Fax (509) 338-3282
www.pullman-wa.gov

MEMORANDUM

TO: Pullman Planning Commission

FROM: Pete Dickinson, Planning Director *PD*

FOR: Meeting of June 24, 2009

SUBJECT: Proposed Dedication of Right-of-Way
Dedication of NE Schweitzer Drive

DATE: June 11, 2009

Recently, Schweitzer Engineering Laboratories, Inc., submitted a proposal to dedicate to the city right-of-way for NE Schweitzer Drive. The proposed Schweitzer Drive provides access to the Schweitzer Engineering Laboratory complex. The property involved in this proposed dedication is 60 feet wide and 500 feet long (see attached Vicinity Map and Location Map).

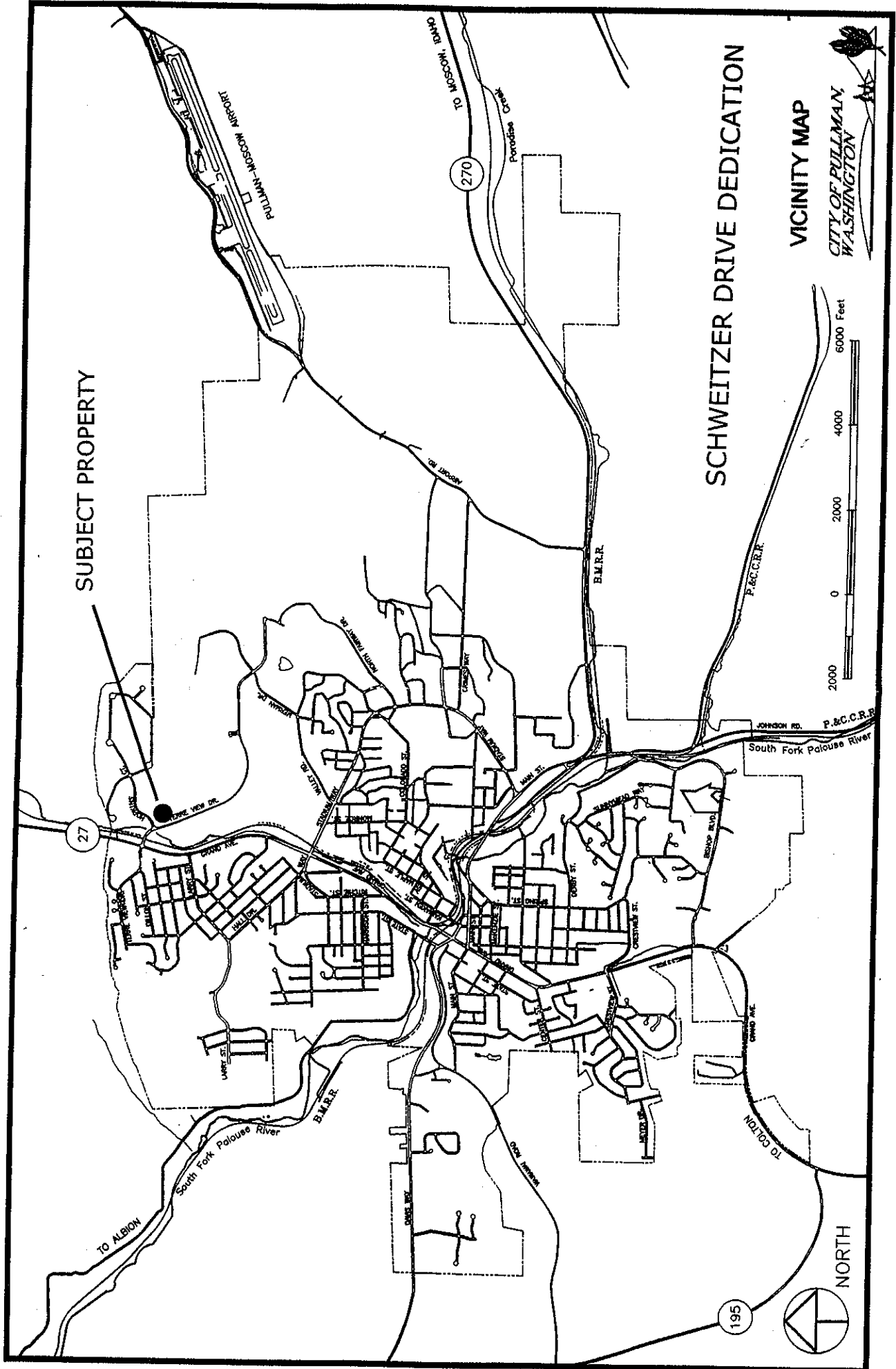
Zoning Code Subsection 17.20.070(13) states that one of the responsibilities of the Planning Commission is as follows:

To review and report to the City Council on the location, extent, and consistency with the Comprehensive Plan regarding proposals for the...dedication of any street... The planning commission may recommend such conditions as are considered appropriate in order that the proposal will be consistent with the Comprehensive Plan.

In staff's view, this dedication of a public street to serve adjacent commercial development clearly meets Comprehensive Plan Goal T.1, which states: "Provide facilities, access and circulation for all land uses to ensure free and safe movement of people and goods." Accordingly, planning staff recommends that the Planning Commission find this proposal consistent with the Comprehensive Plan.

Attachments

pd

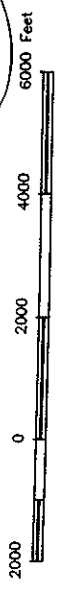


SUBJECT PROPERTY

SCHWEITZER DRIVE DEDICATION

VICINITY MAP

CITY OF PULLMAN,
WASHINGTON



NORTH

South Fork Palouse River

P.&C.C.R.R.

JOHNSON RD.

P.&C.C.R.R.

TO COLTON

GRAND AVE

TO ALBION

TO ALBION

TO ALBION

TO ALBION

TO ALBION

TO ALBION

TO ALBION

TO ALBION

TO ALBION

TO ALBION

TO ALBION

TO ALBION

TO ALBION

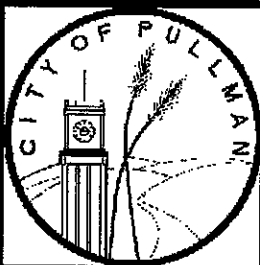
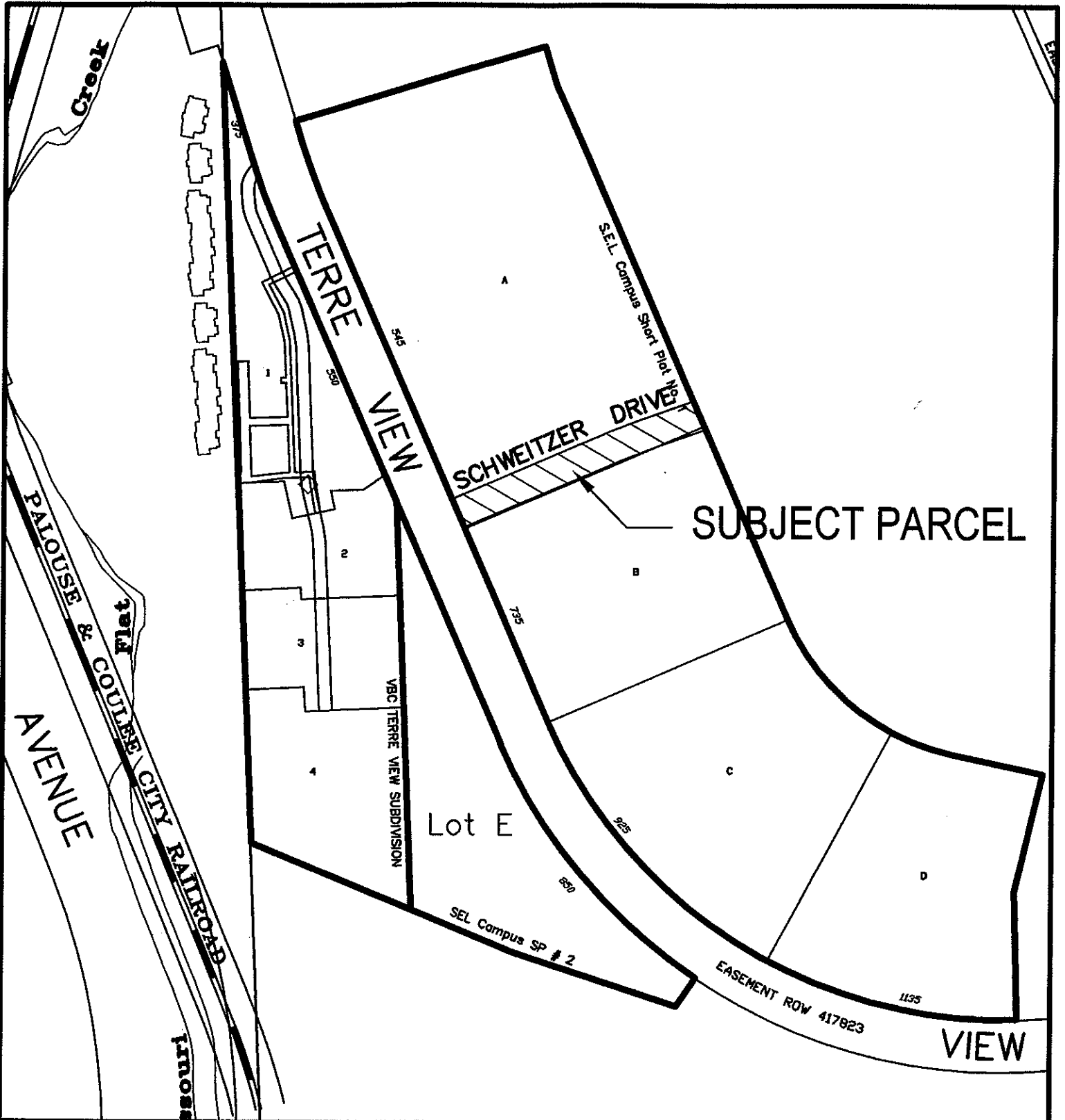
TO ALBION

TO ALBION

TO ALBION

TO ALBION

TO ALBION



Date: 05-08-09
 Scale: NTS
 Dwn: dwc
 Chk:
 Appr:

City of Pullman Engineering Division
 Schweitzer Drive Dedication

