

Parent Connection

What's New

As a new semester begins, we will have new WSU volunteers joining us in the classrooms. Please note that they are here strictly to interact under our direct supervision with the children and are not, at any time, left alone with any of the children.

Noteworthy News

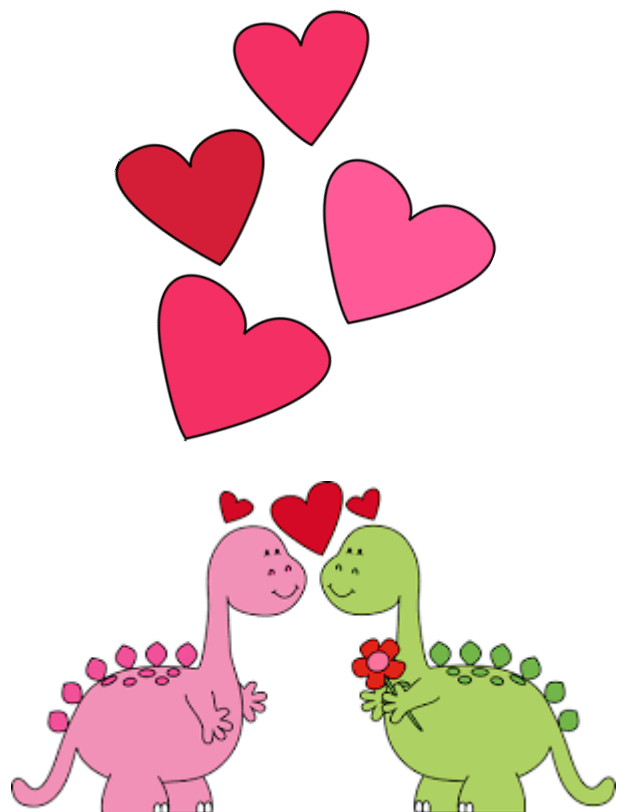
February 14/15:

Valentine's Day parties

February 19:

No School—President's Day

In early February, we will be busy making parent valentines and decorating bags for our Valentine's Day parties. On the 14th and 15th, we will have special crafts and games during both the morning and afternoon classes. If you would like to help plan our special day, there will be a sign-up sheet for the party. The children are welcome, but not required, to participate in our valentine exchange. If you do bring cards or treats to exchange, we ask that you address one to each child in the class. Also please remember that any treats need to be nut free. A list of each class is attached. We will hand out valentines toward the end of the party, so please put them in your child's cubby at arrival time.



In March, we would like to invite parents to come talk to our students about their jobs, share their talents, and skills. Look for a sign-up sheet beginning in late February.



In February, we celebrate family pet month. Each child is invited to bring a picture of a family pet for display on our pet board. All pictures will be cared for and returned at the end of the month. If you do not have a pet, your child can draw a picture of a pet they would like to have and we will display it along with the photos. We will have pet visitors this month and will post a sign-up sheet for those who would like their pets to visit their Preschool class. We ask parents to only bring animals during the time posted, and they must be contained, i.e. leash or cage. If you have concerns regarding allergies or fears, please let us know.



Curriculum Corner

This month, our theme is **Heart Healthy You**. We will talk about our body and how eating nutritious food and exercising helps keep our bodies healthy. Our goal this month is for the children to demonstrate an increase in strength and coordination of their large motor skills. We will encourage this through group games and exercise.

Additional curriculum emphasis will include Children's Dental Hygiene and Responsible Pet Ownership, and Fairy Tale February.

